

AIRDRIVE KEYLOGGER QUICK START



Important tips:

- Works only with external USB keyboards, does not work with laptop keyboards
- To access data, connect to Wi-Fi network **AIR_XXYYZZ** and open **192.168.4.1**
- Be sure to obey keystroke recording laws and regulations in your country!



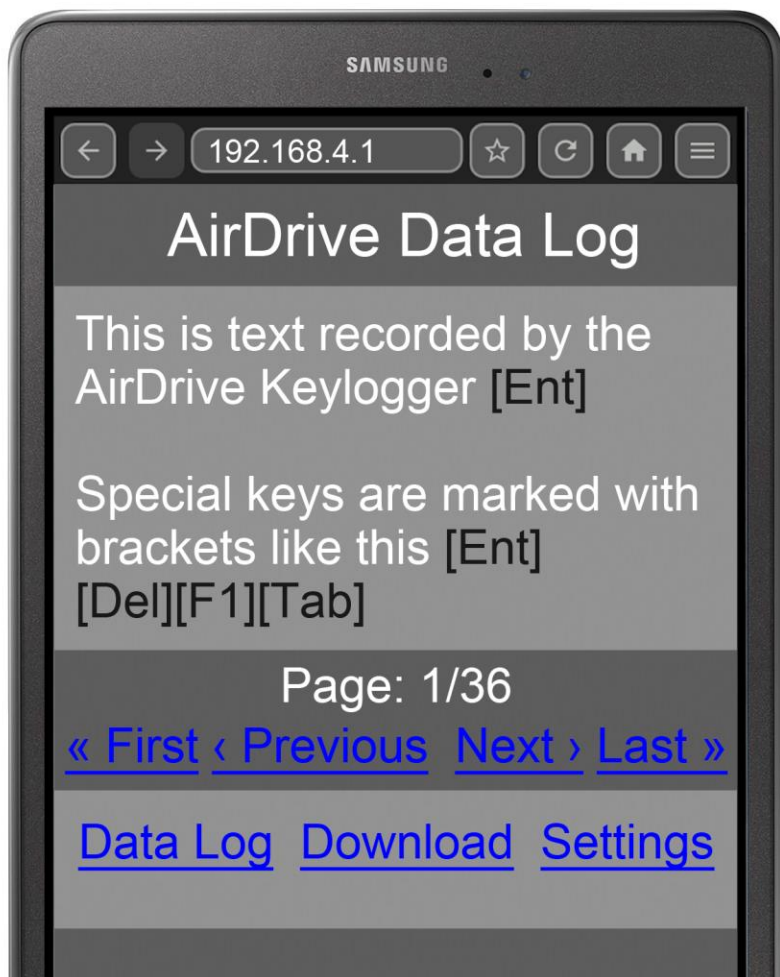
Connect the keylogger
in-line between the
keyboard and
computer

Connect to WiFi network
AIR_XXYYZZ

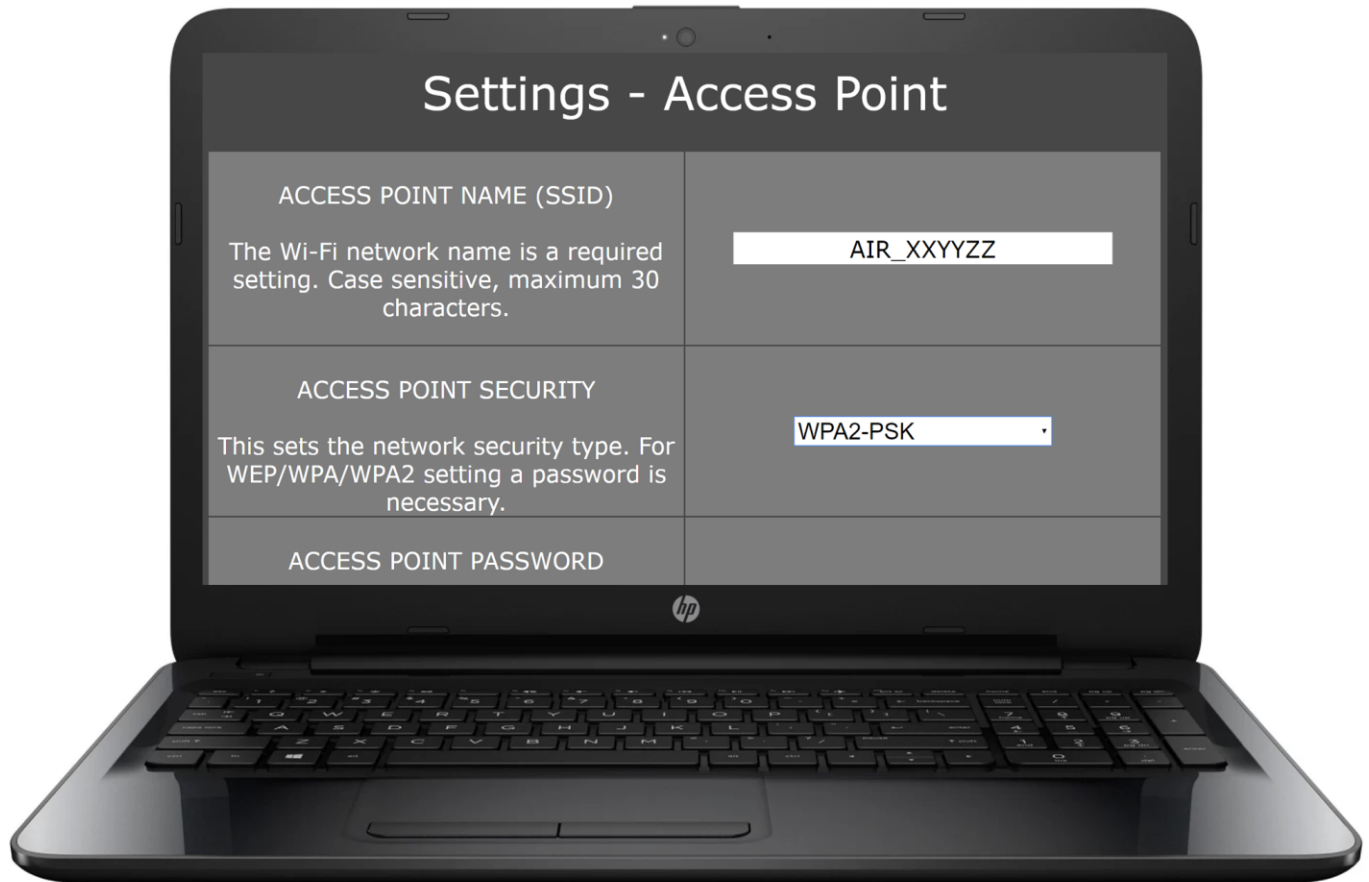
where XXYYZZ is a distinctive device ID

Use any web
browser to
open address
192.168.4.1

Information:
the device is actually a
WiFi Access Point to
which you can connect
using a laptop, tablet,
smartphone, or desktop



Open the settings subpage
to configure the device



**Memorize your password in case you change it.
Otherwise access to the device will be impossible!**

Set the keyboard layout and
special keys log level to
optimize keystroke logging

Open the advanced settings subpage to access features of the PRO and MAX versions

W I - F I D E V I C E

- Enables Internet connection via Access Point
- Necessary for other Pro features to work

T I M E - S T A M P I N G

- Gets current time and date from NTP server
- Enables time-stamping throughout data log

E M A I L R E P O R T I N G

- Requires SMTP Email account
- Enables periodical Email reports with logged data

D A T A S T R E A M I N G

- Enables logged data to get streamed over UDP
- Client-side receiver application available on device

The MAX version can be switched to a full-featured USB flash drive. In flash drive mode the data log is available in file LOG.TXT